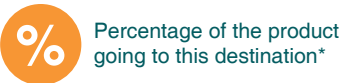
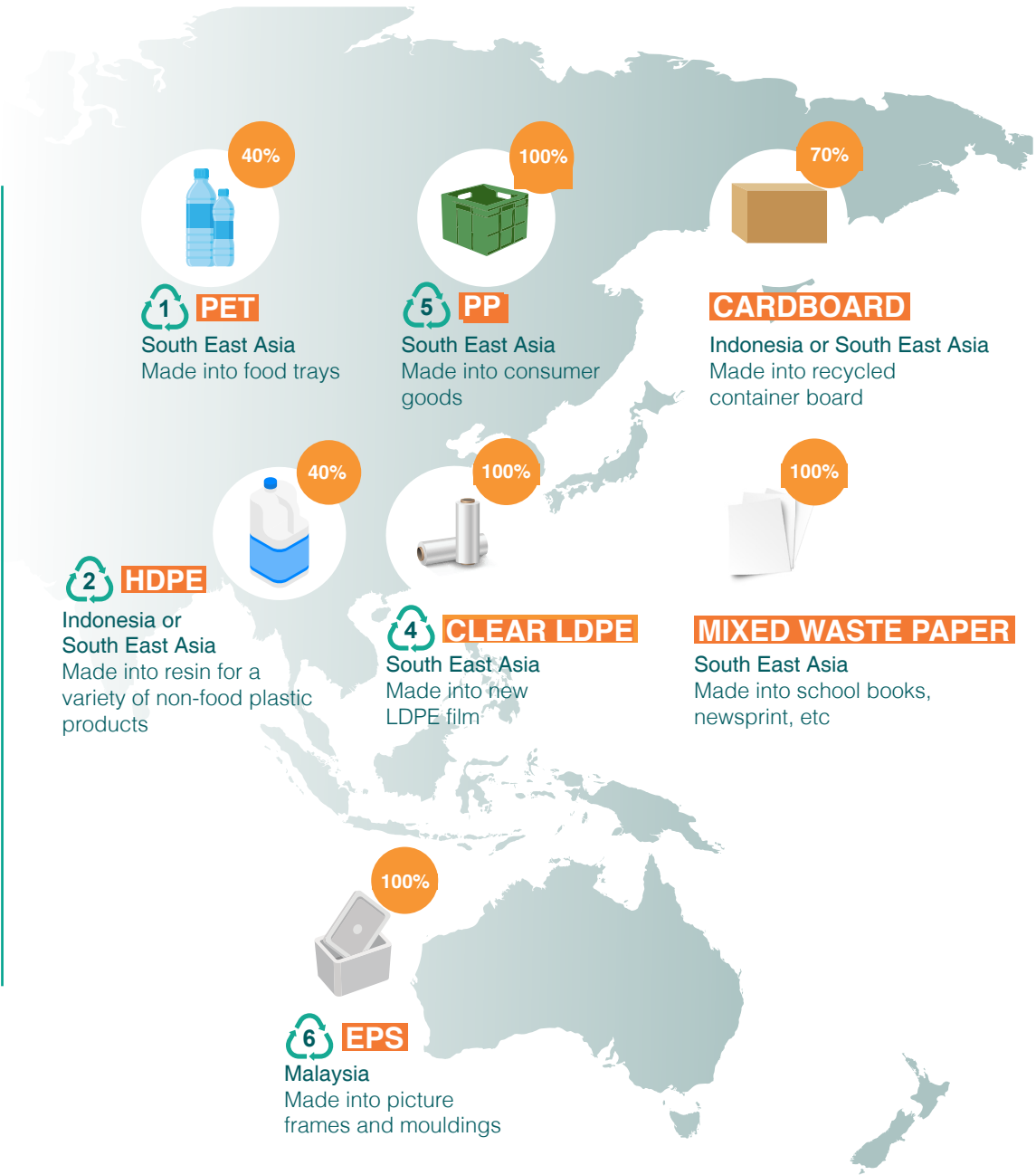
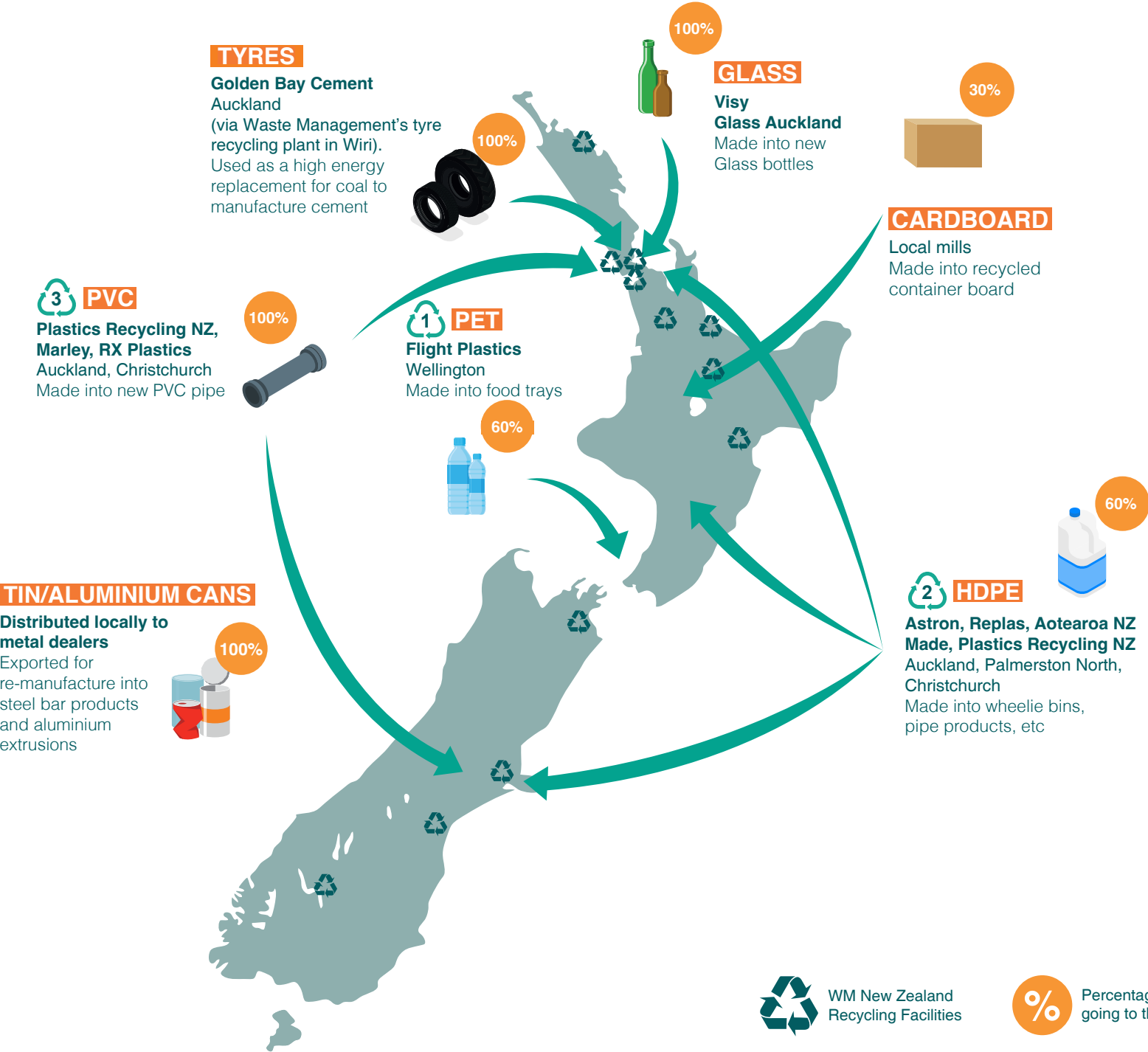


Recycling destinations



In 2024, we collected 250,000 tonnes of recycling at our facilities. Here is a snapshot of where it all went for processing. Note, when there isn't an option to recycle in New Zealand, we send materials to reputable, offshore companies that we have long-standing relationships with.



*Figures accurate as at publication date of February 2025. Figures may fluctuate.